

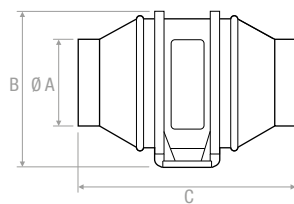
SMT



Caratteristiche: potente estrattore tubolare per installazione in condotta rigida e flessibile. Facile installazione. Silenzioso.

Characteristics: powerful tubular extractor for installation in rigid and flexible pipes. Easy installation. Silent.

DISEGNI | DRAWINGS

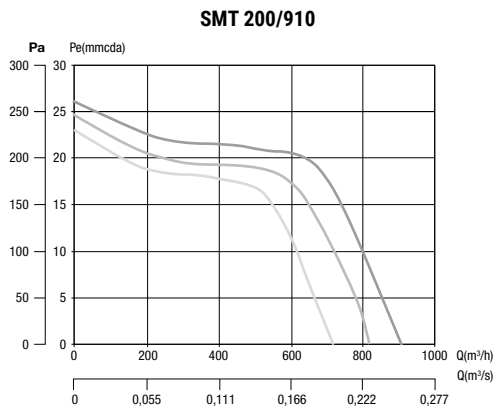
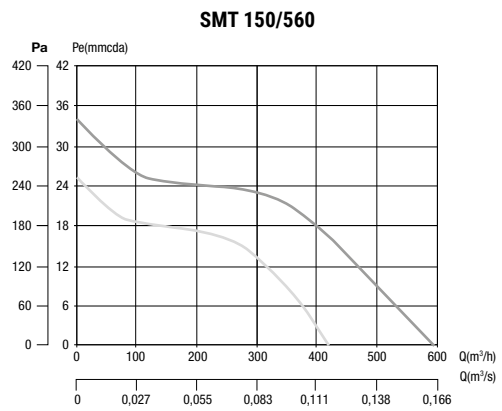
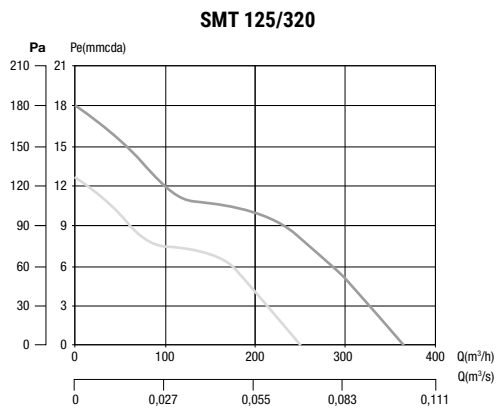
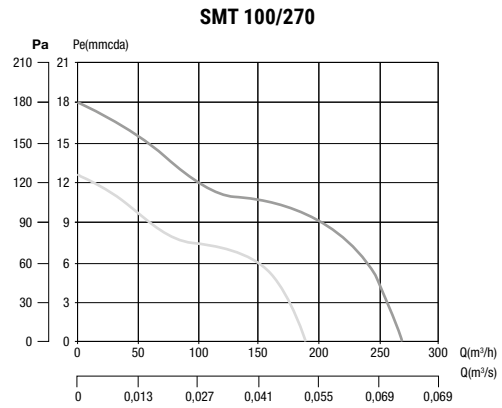
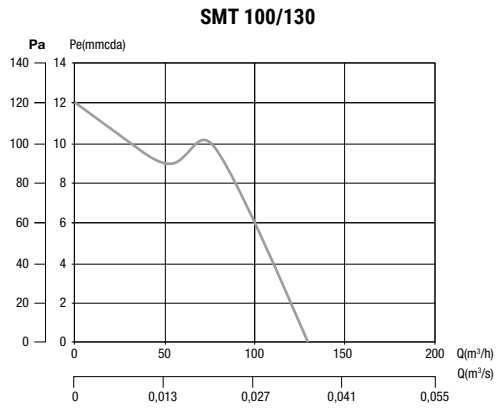


Modello Model	ØA mm	B mm	C mm
100/130	98	171	238
100/270	98	232	315
125/320	122	232	279
150/560	147	244	293,4
200/910	197	278,5	353,6

CARATTERISTICHE TECNICHE | TECHNICAL CHARACTERISTICS

Modello Model	100/130	100/270	125/320	150/560	200/910
V	230	230	230	230	230
W	28	18/40	18/40	60/70	55/65/85
m³/h	130	190/270	250/320	420/560	720/810/910
Ø mm	100	100	125	150	200

TABELLA PRESTAZIONI | PERFORMANCE TABLE



VEN

VERSIONI DISPONIBILI | VERSIONS AVAILABLE

stock

Modello Model	100/130	100/270	125/320	150/560	200/910

ACCESSORIO REGOLATORE VELOCITÀ | ACCESSORY SPEED REGULATION

Codice | Code
SMTRG